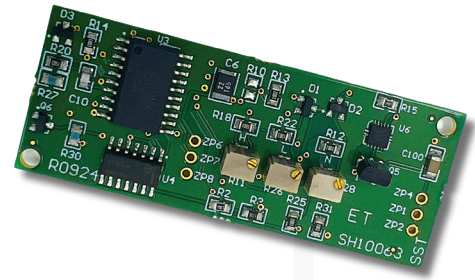




WHEN IT COMES TO MEASURABILITY WE'RE ON THE LEVEL

The SA40072 is a single channel signal conditioner, which provides a 4 to 20mA output. With the ability to interface directly with the complete line of Spectron single axis electrolytic tilt sensors (not included), the SA40072 is the perfect solution for narrow or wide angle measurements. The open architecture design is ideal for space restrictive / OEM applications, while the 4-20mA output can be easily interfaced to most industrial/ process industry controllers. The sensor is remotely mounted from the electronics, thereby providing maximum installation flexibility.



### General Specifications

Input voltage..... +14 to +24Vdc  
 Input current ..... 30mA (max)  
 Output ..... 4-20mA  
 Load (maximum).....  
     .....500 ohms @ +14Vdc input  
     .....1,000 ohms @ +24Vdc input  
 Operating Temp range .....-20 to +70 degC

### Output Ripple (noise)

Output (mA)	Load (ohms)	Ripple (uA @ 600Hz)
19	475	38
12	475	2
5	475	38

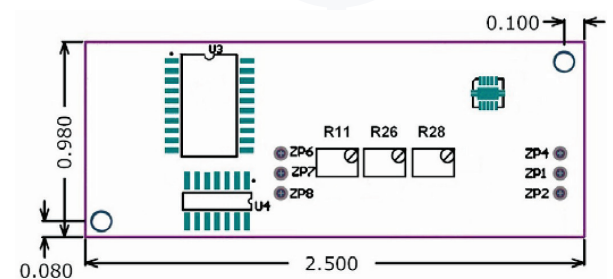
### Adjustment Potentiometers

PCB Location	Function
R28	Null (12mA)
R11	Positive Output (20mA max.)
R26	Negative Output (4mA min.)

### Input/Output Connections

PCB Location	Function
ZP1	Input Voltage
ZP2	Ground
ZP3	4-20mA out put
ZP4	Sensor electrode 'A'
ZP5	Sensor electrode 'B'
ZP6	Sensor neutral (center)

### Dimensions (inches)



### Mounting Holes - M2.5 (2 places)

*\*Consult factory for detailed communication protocol information!*