

SGE PRECISION LEVEL



The **SGE Precision Level** is a hand held portable leveling instrument which incorporates Spectron's precision tilt sensor in a easy to use nulling device. Ideal for Lab use, it has a linear tilt range of 0.25 degrees and has five different display modes.

Applications

- University and Commercial Labs
- Machine shops
- Construction sites

General Specifications

Input Voltage: 8-32V DC
 Input Current: 130mA
 Output: LCD Readout : 7.5 digits, depending on selected output

Display Outputs: ArcSec
 Degrees
 Radians mm/m
 % Slope

Accuracy: @ Null = 5 ArcSec (0.00138°)
 0.0 -0.15° = 10 ArcSec (0.00277°)
 0.16-0.25° = 20 ArcSec (0.00555°)

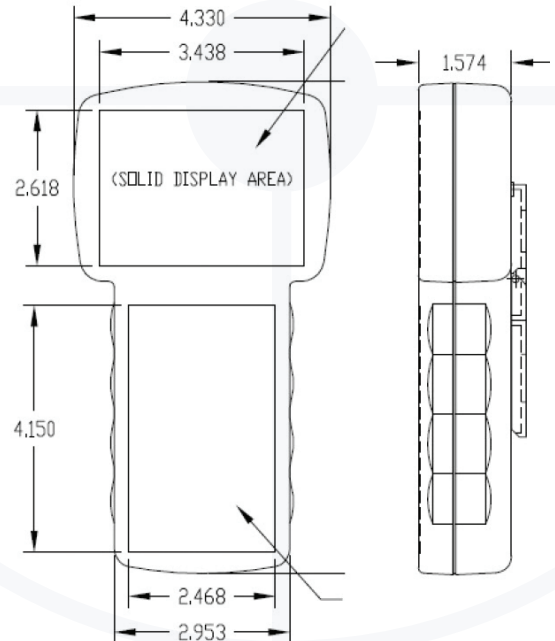
Repeatability: 5 ArcSec (0.00138°)
 Resolution: 0.2 ArcSec (.000055°)
 Total Range: 0.4 Degrees (1360 ArcSec)
 Linear Range: 0.25 Degrees (900 ArcSec)
 Power Up Time: 30 Sec
 Response Time: 4 Sec

Settling Time: Tilt within full range: 1.5 sec = +/-2 ArcSec of null
 Tilt beyond full range: 2 min = +/-20 ArcSec of null
 5 min = +/-2 ArcSec of null

Cable length between unit and sensor: 8 Ft
 Power Connector: 2.5mm Barrel Connector (supplied)



Physical Dimensions (inches)

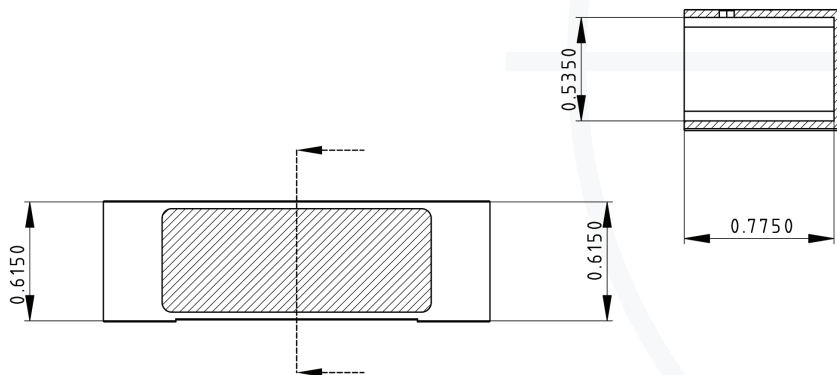
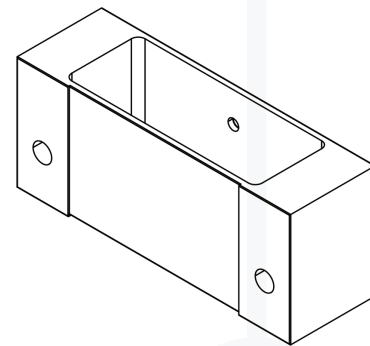
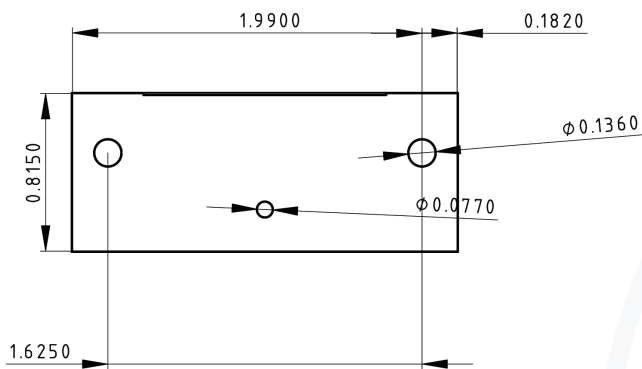




Sensor Housing

Ordering Information

Part#: SSY0261



Consult factory for further technical information and ordering details!