

Dual Axis Inclinometer In Aluminum Housing

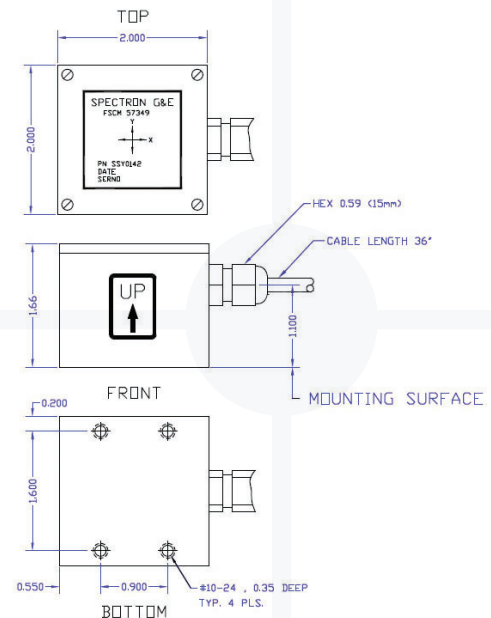


Our **Dual Axis Inclinometer sensor** is combined with custom designed hybrid signal conditioning circuitry. The result is a high performance / low cost dual axis inclinometer which can tackle the most demanding applications. Temperature compensated to the full industrial range, and feature null and scale adjustments (factory set). The open architecture construction makes them ideal for OEM applications, and comes in a custom rugged aluminum enclosure, meant for rugged use.



Model #SSY0142-5

CHARACTERISTICS	
Range (arc degrees)	+/-20
Output (Vdc, referenced to input common)	+1 to +4
Input Voltage (Vdc, unregulated)	+5, +/-5%
Input Current (mA)	1.5
Resolution (arc degrees)	0.01
Repeatability (arc degrees)	0.01
Output Ripple	
% of signal value	0.2
mV RMS	-
Accuracy (arc degrees)	
at 10 degrees	+/-0.06
at 20 degrees	+/-0.6
at 30 degrees	-
at 45 degrees	-
Settling Time (mSec @ 20 degrees C)	500
Temperature Range (degrees C)	
Operating	-40 to +80
Storage	-40 to +80
Temp. Coefficient of Null (arc seconds / deg.C)	10
Temp. Coefficient of Scale (%/deg.C typ.)	0.1
Null Adjustment Range	+/-0.2
Weight (grams/approx.)	10



Electrical Connections

Red - +5VDC
 Black - GND
 Brown - VREF (2.5VDC) White - X Axis
 Green - Y Axis

Scale Factor

Calibration X - .5VDC at 10 Deg
 Calibration Y - .5VDC at 10 Deg